

2tec2[®]
high tech flooring

MADE IN BELGIUM

Commercial woven vinyl flooring for Workspaces, Hospitality, Healthcare,
Public Spaces and Retail

2tec2.com



01

HIGH TECH FLOORING

About us	6	Installation pattern	14
High Tech Flooring	9	Quality control	16
2tec2, a wise choice	10	Comfort Backing®	18
Sustainability	12	2tec2 Play®	20

02

WORLDWIDE PROJECTS

Galena	24	Celeste	52
Meteor	26	Juno	54
Solaris	27	Moonrock	56
Andromeda, Planet & Titan	28	Borealis	57
Supernova	30	Coffee Bean	58
Moonless Night	32	Morion Brown	60
Flint	34	Lava	62
Helios	36	Chromite Grey	63
Rosetta	38	Planet	64
Darkside	39	Opal	66
Eclipse & Moonless Night	40	Supernova, Titan & Arid	68
Coffee Bean, Pulsar, Aurora,		Darkside	70
Titan & Equinox	42	Diamond Orange	72
Zodiac Hexagon	44	Pulsar, Equinox & Aurora	74
Magnetite Grey	45	Obsidian Black	75
Flint	46	Quasar	76
Stardust	48	Asteroid & Black Hole	78
Oyster	50	Andromeda	79

03

COLLECTION OVERVIEW

Barcode	84	New Basic	89
Cracked Earth	84	Infinite	90
Herringbone	85	Colourful	92
Hybrid	86	Stripes	94
Lustre	88	Technical info	97



Daisy - Customer Service Manager



Board of Directors Philippe, Katia & James



Nathalie - Designer



Rudy - Weaver



Johan - Mechanic

ABOUT US

2tec2 is made by a dynamic team who shares a passion for innovation, design and architecture. Every day, we strive to reduce our ecological footprint thanks to our continuously evolving production process.

This focus and dedication ensures a high quality product that is sustainable for both flooring and people.



Wesley - Lab Engineer



Dirk - Operator



Alexandre - Sales Manager France



Freddy - Purchase & Planning



Hervé - Operator



Gudrun - Sales Manager Belgium



Liesbeth - Commercial Department



David - Export Manager



HIGH TECH FLOORING


"Fulfilling customer's expectations stands at the core of our R&D division and production plant. Therefore, we have a proactive approach to possible issues and we make sure to follow up on each production batch.

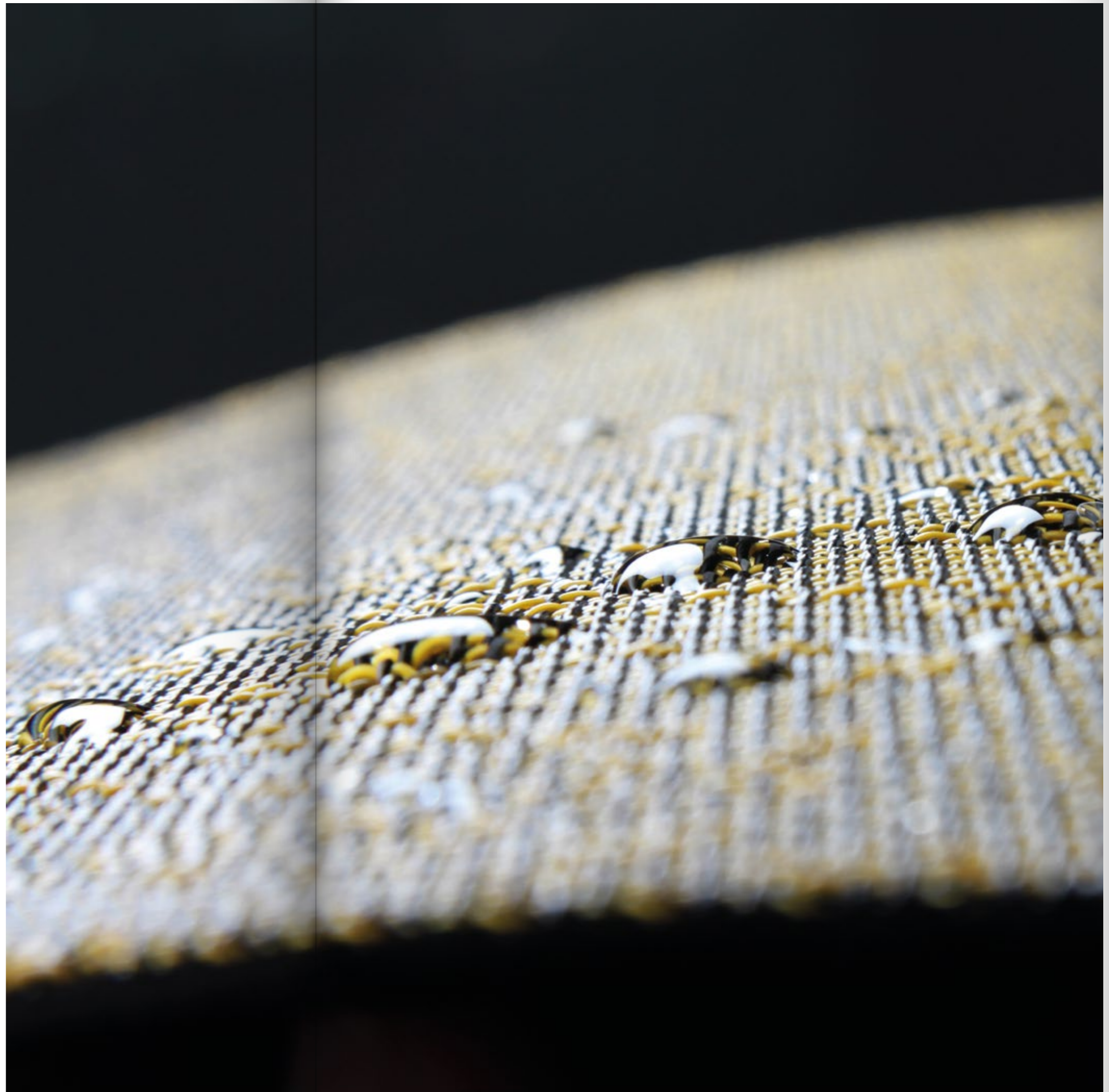
We manufacture a woven vinyl flooring that is durable, functional and assures a high comfort without neglecting the environment. Sustainable manufacturing is an ongoing process of improvement. A process that will continue in the future and that is essential to our core values.

This goal can be reached thanks to our fully integrated production and through fantastic teamwork, where the philosophy is to make quality, design and sustainability coincide."

Thomas Vantieghem
Product Manager 2tec2

2TEC2, A WISE CHOICE

- Functional flooring combining the best characteristics of both hard and soft surface flooring.
- Rolls are seamless. A selection of tiles (Infinite, Lustre, Colourful, Hybrid and Cracked Earth collection) are seamless in a monolithic broadloom installation. See p.11 for more information.
- Innovative contemporary design look. Unlimited design flexibility.
- Tiles available on demand in various shapes:

- Excellent acoustic properties and improved underfoot comfort thanks to the acoustic Comfort Backing®. Reduces both ambient and impact sound. Impact Sound Reduction 19dB, Walking Noise Reduction 70%, Sound Absorption α_w 0,15.
- Extremely robust with almost no aspect change over time.
- Stain resistant and water proof. 100% cleanable.
- 100% vertically integrated in-house manufacturing.
- Suitable for projects built according to BREEAM and LEED.
- 2tec2 is a sustainable product. The acoustic backing is 100% recycled.
- Phthalate free. No heavy Metals.



SUSTAINABILITY

Every day, we strive to reduce our environmental footprint thanks to our continuously evolving production process. This focus and dedication ensures a high quality product that is sustainable and durable. Sustainable manufacturing is an ongoing process of improvement. A process that will continue in the future and that is essential to our core values.

2tec2 has already taken a lot of initiatives to reduce its environmental impact. Here are a few initiatives taken by 2tec2:

Renewable energy and raw materials

- Our 3600 solar panels provide energy for our entire production process.
- We use a heat recovery system for the day to day activities in our production plant.
- Vinyl is made out of 50% NaCl (salt), which is endlessly available.

Recycling

- We invest in pre-consumer waste recycling: all virgin raw material that enters our production process, is manufactured to an end product. Our waste material is reused in the top layer of 2tec2.
- The acoustic felt backing or Comfort Backing® is 100% recycled.
- Vinyl is a thermoplastic product that can be recycled over and over again.

CO₂ emissions

- We have a fully integrated production process at one central location without any transportation between different production phases or plants.
- We strive to be CO₂ neutral.

Certifications

- We are REACH* compliant.
- We are LEED & BREEAM compliant.

Free from dangerous chemicals

- Phthalate free.
- No heavy metals.
- 2tec2 is suitable for healthcare environments.

Eco-friendly maintenance

- 2tec2 can be cleaned only using water: no chemicals needed.

Durability

- 2tec2 is perfect for heavy traffic use and has a minimum of 10-year warranty.

A green future

We believe & invest in the cradle-to-cradle approach. Every raw material will be reused to create new tiles and rolls. We want 2tec2 to be 100% recyclable in the near future.

*REACH is a regulation of the European Union, adopted to improve the protection of human health and the environment from the risks that can be posed by chemicals, while enhancing the competitiveness of the EU chemicals industry.



2tec2 PVC waste material reused in the top layer

MONOLITHIC INSTALLATION

Tiles installed in a uni-directional pattern have a sleek, monolithic appearance. There are no visible seams.

Collection:

Hybrid, Infinite, Lustre, Cracked Earth and Colourful

Installation patterns:



Ashlar



Brick



014

Magnetite Grey

QUARTERTURN INSTALLATION

Tiles installed in a checkerboard pattern.

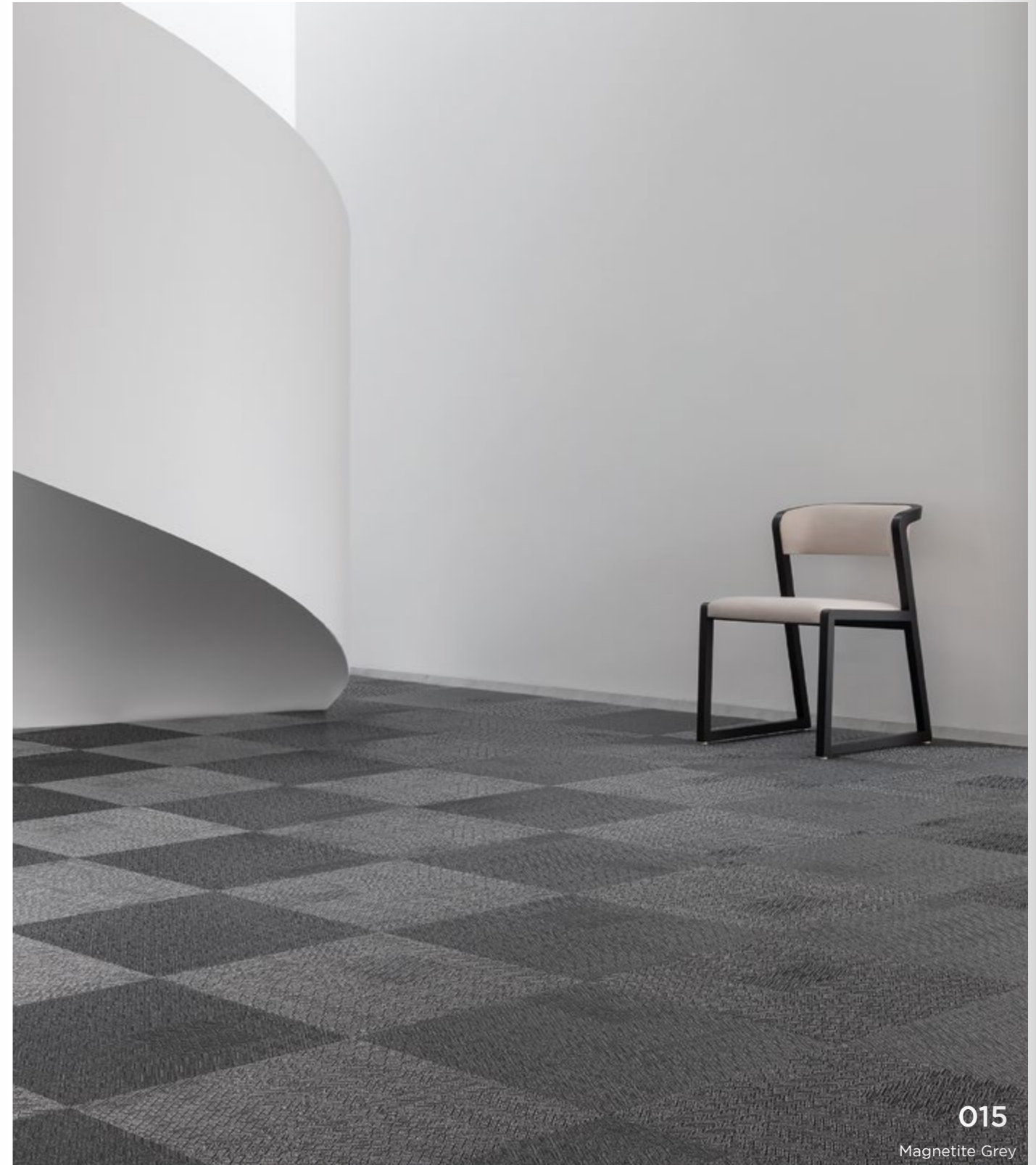
Collection:

Hybrid, Infinite, Lustre, New Basic, Cracked Earth, Colourful, Barcode and Stripes

Installation pattern:



Checkerboard



015

Magnetite Grey

QUALITY CONTROL

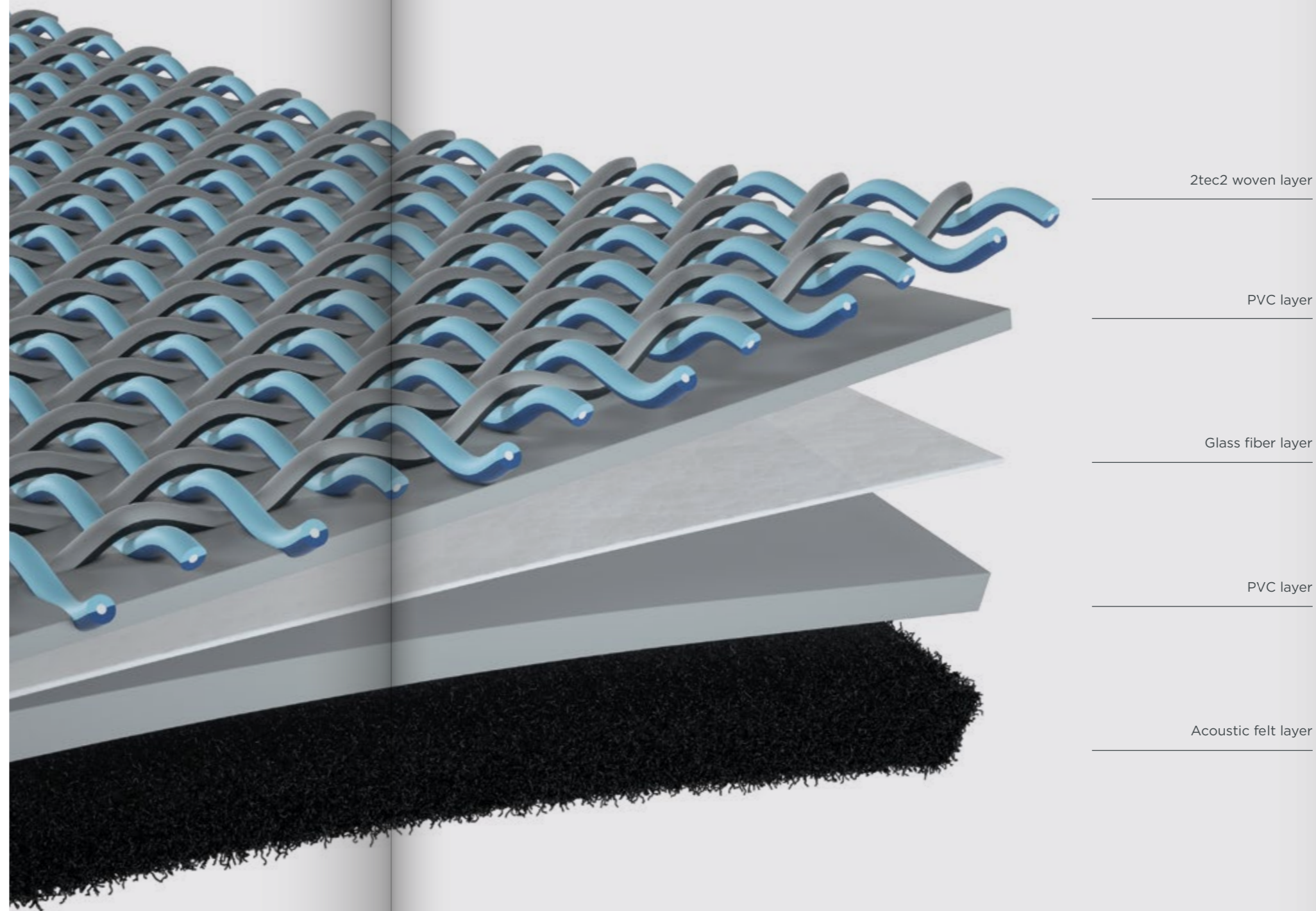
2tec2 continuously improves quality and has a sophisticated R&D lab for that purpose. Manufacturing processes and output are constantly monitored with thousands of tests.

2tec2 does not follow the industry standards, 2tec2 exceeds them.



COMFORT BACKING®

The Comfort Backing® is standard on 2tec2 rolls and tiles. This innovative backing comes with an additional felt layer which improves sound absorption and underfoot comfort. It brings the acoustic properties of 2tec2 close to those of most carpets, exceeding by far those of hard floorings and LVT's. The acoustic felt layer is made out of recycled PET.



2tec2 woven layer

PVC layer

Glass fiber layer

PVC layer

Acoustic felt layer

19dB

Impact sound reduction

0,15
α_w

Sound absorption

70%

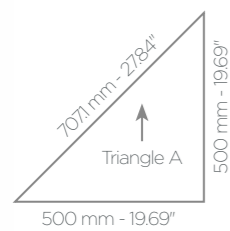
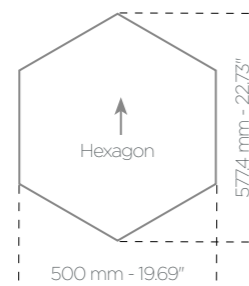
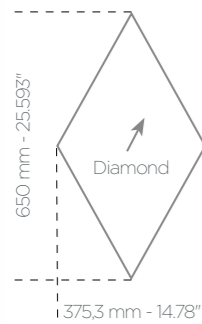
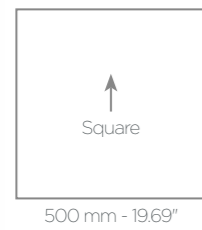
Walking noise reduction

2TEC2 PLAY®

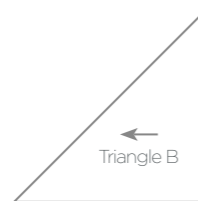
2tec2 allows you to play with various shapes to create inspiring floors in woven vinyl. Diamonds, Hexagons, Planks, Triangles and Mini Squares are among some of our suggestions, but actually any shape and size is possible. Choose any colour from the 2tec2 tile collection. Let your imagination flow.

Download the Play catalogue on 2tec2.com/play

Any shape and size:



&



&



↑ = Warp direction





WORLDWIDE PROJECTS

2tec2 has been specified by many architects & designers all over the world and installed in some outstanding projects. Here's our selection. Get Inspired.



METEOR TILES

Client: Private - Country: Belgium



026

SOLARIS TILES

Client: Private - Country: Belgium



027

**ANDROMEDA,
PLANET & TITAN**

SHAPE: TRIANGLE TILES

Client: Fleischmarkt
Interior Design: Anna Prinzhorn
Country: Austria


Installed with A triangles.
See p.20 for more details on special tile shapes.



SUPERNOVA

SHAPE: HEXAGON TILES

Client: ForMail
Country: Belgium

Same tiles installed in 2 different directions 
See p.20 for more details on special tile shapes.



MOONLESS NIGHT TILES

Client: BIBLIOTĒKA N°1 Restorāns
Interior Design: Leopard Creative & Production
Country: Latvia



FLINT ROLLS

Client: Lighting Design Office
Interior Design: Moko Interior
Country: Hungary



HELIOS TILES

Client: Private
Country: Belgium



ROSETTA TILES

Client: Private - Country: Belgium



038

DARKSIDE TILES

Client: Private - Country: Belgium



039

ECLIPSE & MOONLESS NIGHT TILES

Client: Koedood Dieselservice - Interior Design: RoosRos Architects - Country: The Netherlands




COFFEE BEAN, PULSAR, AURORA, TITAN & EQUINOX TILES

Client: Singapore Library Harbourfront - Interior Design: Deco Expression Private Limited - Country: Singapore



ZODIAC HEXAGON TILES

Client: Hekta På Tur - Interior Design: Into Design AS - Country: Norway

Same tiles installed in 3 different directions 
See p.20 for more details on special tile shapes.



044

MAGNETITE GREY TILES

Client: Feiring Bruk - Country: Norway



045

FLINT

SHAPE: PLANK TILES

Client: Trinseo
Interior Design: Aarts & Co
Country: The Netherlands

See p.20 for more details on special tile shapes.



STARDUST TILES

Client: Private
Country: Belgium

Same tiles installed in 2 different directions  



OYSTER ROLLS

Client: Schuhe Lücke
Interior Design: Ganter Property Development GmbH
Country: Germany



CELESTE TILES

Client: Private
Country: Belgium

Same tiles installed in 2 different directions ▲▶



JUNO TILES

Client: Private
Architects: De Coene Interior Design
Country: Belgium



MOONROCK TILES

Client: Porsche - Interior Design: ProsjektGulv AS - Country: Norway



056

- INDEX -

BOREALIS TILES

Client: Private - Country: Belgium



057

- INDEX -

COFFEE BEAN TILES

Client: Oettinger Davidoff - Interior Design: Gaetan Mansard - Country: Worldwide



MORION BROWN TILES

Cient: Martin's Agora City Resort - Country: Belgium



060



061

LAVA ROLLS



CHROMITE GREY TILES

Client: Cineplexx - Architect: Andreas Mangl - Country: Austria



PLANET TILES

Client: Agences Le Crédit Lyonnais
Country: France



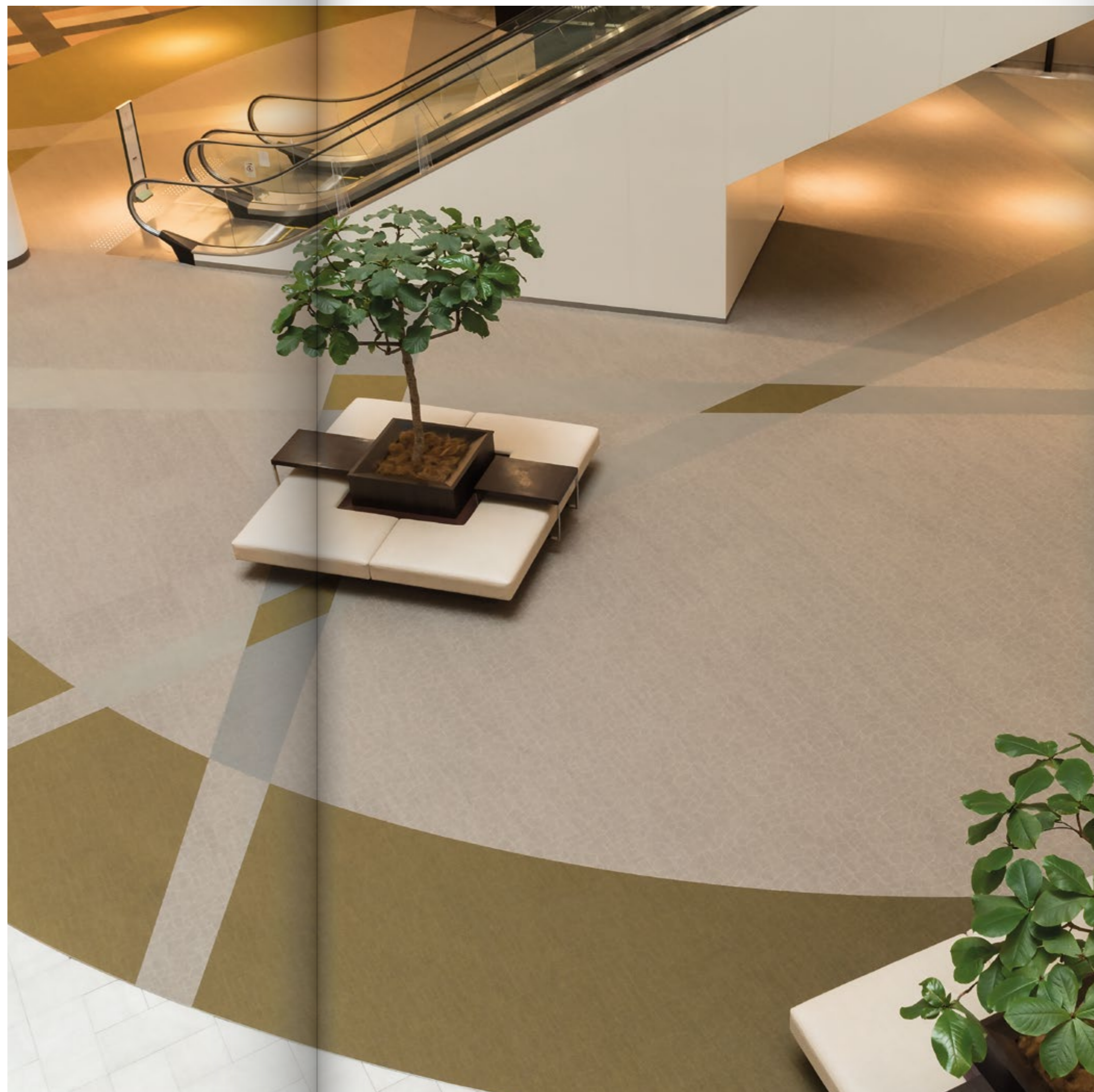
OPAL ROLLS

Client: 9Hotel Paquis
Architects: Groupe Tagerim
Country: Austria



**SUPERNOVA,
TITAN & ARID TILES**

Client: Nishinomiya Gardens, Department Store
Country: Japan



DARKSIDE TILES

Client: ING Cedar
Architects: HofmanDujardin Architects
Country: The Netherlands



DIAMOND ORANGE ROLLS

Client: IZAR Wellness Institute
Interior Design: Fair Wood Builds
Country: United States



**PULSAR, EQUINOX & AURORA
SHAPE: DIAMOND TILES**

Client: Private - Country: Belgium - See p.20 for more details on special tile shapes



074

OBSIDIAN BLACK TILES

Client: Pure Pharma - Country: Belgium



075

QUASAR TILES

Cient: LXRY Media Group - Country: The Netherlands - Custom rug: LE Projects, see p. 96



ASTEROID & BLACK HOLE TILES

Client: De Beauvoir Block - Interior Design: Sella Concept - Country: United Kingdom

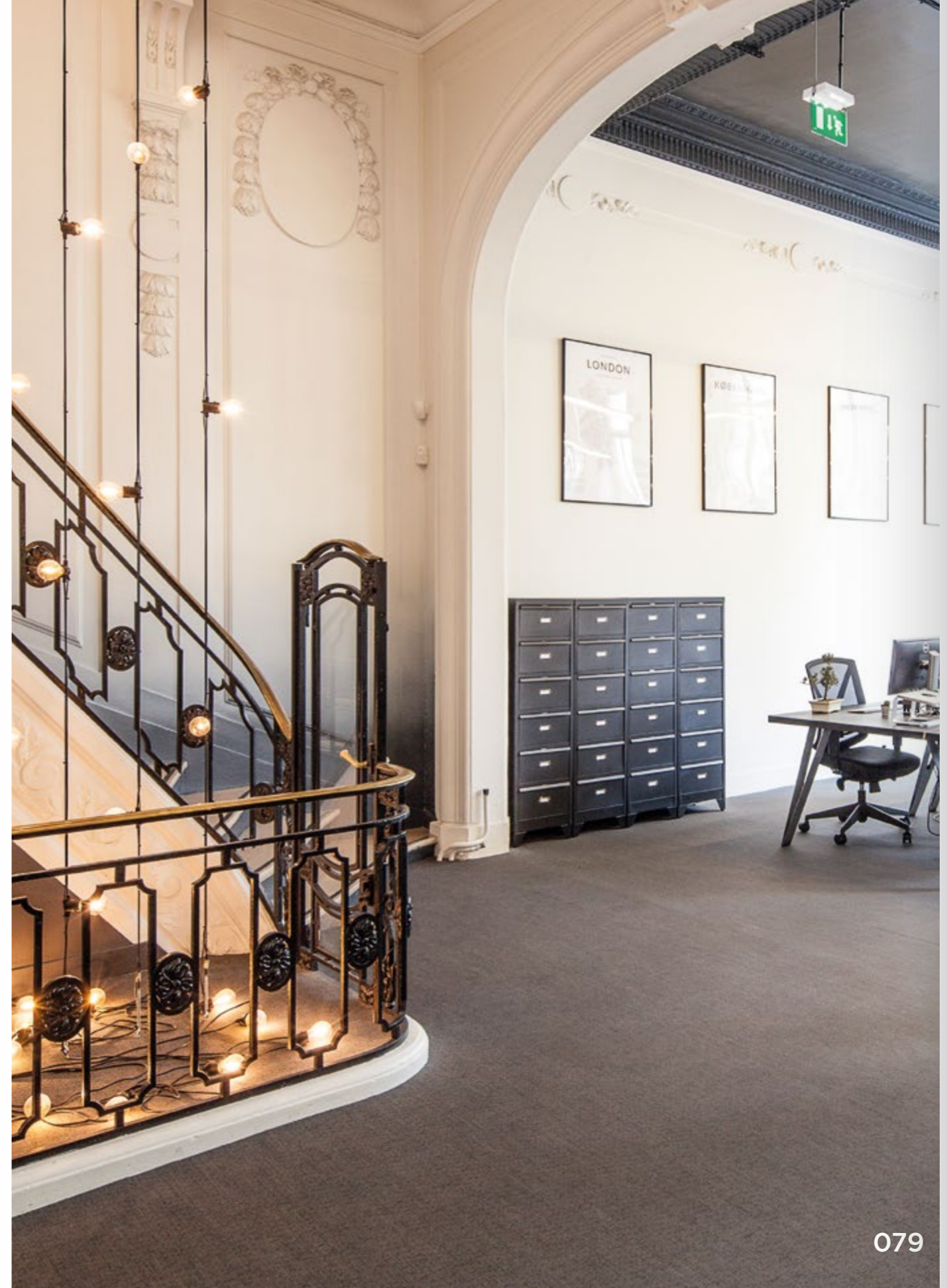


078

- INDEX -

ANDROMEDA TILES

Client: Fabernovel - Interior Design: Vincent & Gloria Architects - Country: France



079

- INDEX -



WORLDWIDE PROJECTS

WORKSPACE

Moët Hennessy, France - Koedood Dieselservice, The Netherlands - TU Delft, The Netherlands - Porsche, Norway - Amazon, Poland - ING HQ, The Netherlands - AIB, UK - Fabernovel, France - Tosoh, Netherlands - Bank Delen, Belgium - De Beauvoir Block, UK - Banco Cerregosa, Portugal Pure Pharma, Belgium - Monaco Informatique, Monaco - Deloitte, France DHL, Greece - Renault Technocenter, France - LinkedIn, USA - Dior, France Ernst & Young, Greece - Ferrero, Italy - Tripadvisor HQ, USA - Warner Music, Belgium - Gazprom Neft, Russia Google, UK - Cartier, UK - Coca-Cola, Germany - Pfizer, Hungary Rolls-Royce, Belgium - Discovery Chanel, Italy - BBC, USA - Oracle, USA Fedex, Belgium - Autodesk, USA - BNB Paribas-Fortis Bank, Belgium Hay group, The Netherlands - Hewlett Packard, Romania - IBM, USA Johnson & Johnson, Belgium - Kinnarps, France - Relief International, USA Leighton Constructions, Australia - Microsoft, Finland - Philip Morris, Czech Republic Portugal Telecom, Portugal - Shell, The Netherlands Stanley Black & Decker, Italy Volvo Trucks, Belgium - Buzzy Nest, Belgium - L'Oréal, Germany, France

HOSPITALITY

Thermea Palace, Belgium - Biblioteka N°1 Restorans, Latvia - Laguno Hotel, Belgium Intercontinental, Japan - Princess Sofia Hotel, Spain - 9Hotel, Switzerland - RIU Hotel, Spain - Bel Air, USA - Novotel, France - W'hotel, USA - Asklepion, Czech Republic Astoria Hotel, Slovenia - Byblos, France - Cannery Casino, USA - Club Méditerranée, France - Center Parks, France - Casino Barrière, France - Lancia Lounge Bar, Belgium - Lufthansa, Germany - Onde, Australia - Sabaya Resort, Australia - Sheraton Hotel, USA Sofitel, Morocco - Soncna HisaHotel, Slovenia Starbucks, Worldwide - Sun Hotel, Portugal - Room 230, Italy - Marriott, Worldwide

RETAIL

Boggi, Italy - Selfridges, UK - Nishinomiya Gardens, Japan - CIC Bank, France - Rolex, Serbia - Reiseland, Germany - Lavazza, Italy Hugo Boss, Worldwide - Longchamp, Worldwide - AtoI, France - Axa Bank, Belgium - Breuninger, Germany - Carolina Herrera, Latin America - Credit Agricole, France - Creditbank, Bulgaria - Davidoff, Worldwide - Dorothy Perkins, Worldwide - Evans Stores, UK - Finanzbank, Turkey - Galeries Lafayette, France ING Bank, Romania - Odea Bank, Turkey - Private Banking APK, Luxembourg Rabobank, The Netherlands - Sampobank, Estonia - Samsung, Italy - Security Innovation LAB, The Netherlands - Sberbank, Russia - Vodaphone Spain, Portugal, Malta - Unicredit, Austria - HypoVereinsbank, Germany - Menswear, Norway - KBC, Belgium - Crédit Lyonnais, France - Shabelski, Ukraine

SHOWROOM & EXHIBITION

Giorgio Armani, Italy - Lenovo, Czech Republic - BMW, Romania - Brice, France Casaligne, France - Bouyghes Construction, France - Peugeot, Switzerland Daikin Europe, Belgium - Dolce Gabbana, UK - Guerlain Cosmetics, France Berlioni, Italy - Hyundai Salon De L'auto, France - Mitsubishi, France - Opel, Belgium Porsche Group, Belgium - Le Tricentenaire, Luxembourg - Whirlpool, Czech Republic Nissan, Germany - Motor Show, Germany

PUBLIC SPACES

Split Airport, Croatia - UGC, France - Cineplexx, Austria - The New York Public Library, USA - Singapore Library, Singapore - Boston University, USA - National Library of Korea, South Korea - National Library Board, Singapore - Brussels Expo, Belgium Musée des Arts Décoratifs, France - City of Las Vegas, USA University San Jorge Zaragoza, Spain - Philips Arena, USA - Navarra University, Spain Norwegian Embassy, Greece - Romerio University, Lithuania - Chocolate Museum, Belgium - Archeological & Historical Museum of Kernave, Lithuania - Harvard Club of NYC, USA - Korupark Cinema Complex, Turkey Musée Du Quai Branly, France - Public Library, Belgium - LVMH, France - School of Management IEDC, Slovenia - Occidental College, USA - Grace Institute, USA Médiathèque de Val d'Isère, France - La Grande Arche, France - MIPIM, France

HEALTHCARE

Clinica Prof. Luis Jardim, Portugal - Psychiatric Center Caritas, Belgium Life Time Fitness Center, USA - Kapittelhof Resthouse, Belgium - Arena Health Club, Portugal - Hillside Fitness Club, Turkey - Hyde Park Club, Australia IZAR Wellness Institute, USA



03

COLLECTION
OVERVIEW

BARCODE



Quartz - Roll & Tile



SCALE: 1/12.5

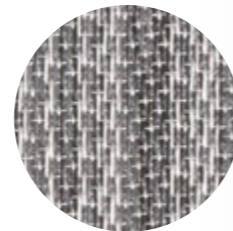


SCALE 1/1

Diamond - Roll & Tile



SCALE: 1/12.5

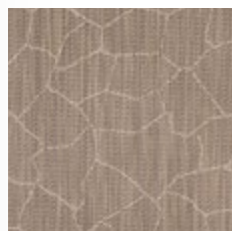


SCALE 1/1

CRACKED EARTH



Arid - Roll & Tile

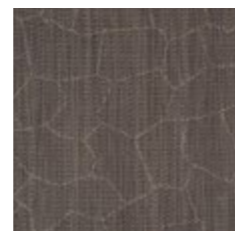


SCALE: 1/12.5

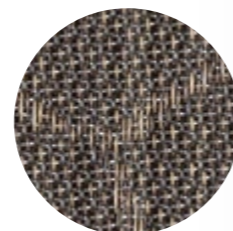


SCALE 1/1

Rift - Roll & Tile



SCALE: 1/12.5

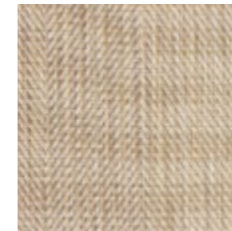


SCALE 1/1

HERRINGBONE



Oyster - Roll

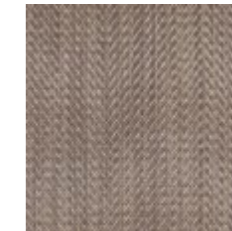


SCALE: 1/12.5



SCALE 1/1

Sandstone - Roll

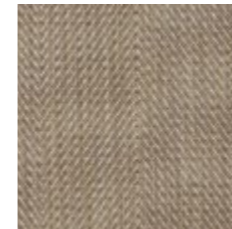


SCALE: 1/12.5

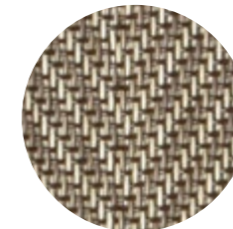


SCALE 1/1

Dune - Roll

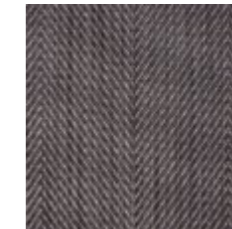


SCALE: 1/12.5



SCALE 1/1

Steel - Roll

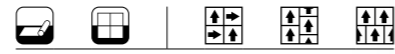


SCALE: 1/12.5



SCALE 1/1

HYBRID



Helios - Roll & Tile

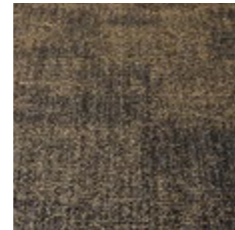


SCALE: 1/12.5



SCALE 1/1

Borealis - Roll & Tile



SCALE: 1/12.5



SCALE 1/1

Stellar - Roll & Tile

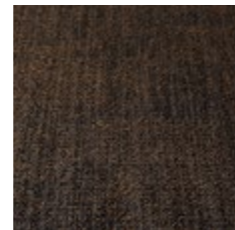


SCALE: 1/12.5

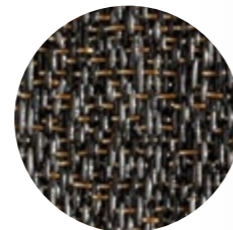


SCALE 1/1

Solaris - Roll & Tile

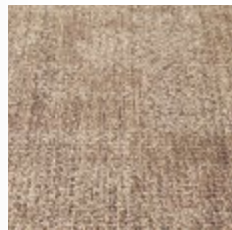


SCALE: 1/12.5



SCALE 1/1

Magellan - Roll & Tile



SCALE: 1/12.5



SCALE 1/1

Meteor - Roll & Tile



SCALE: 1/12.5



SCALE 1/1

Stardust - Roll & Tile



SCALE: 1/12.5

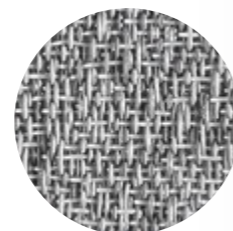


SCALE 1/1

Celeste - Roll & Tile



SCALE: 1/12.5

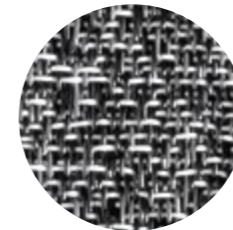


SCALE 1/1

Galena - Roll & Tile



SCALE: 1/12.5



SCALE 1/1

Darkside - Roll & Tile

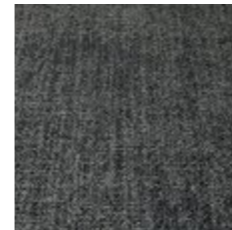


SCALE: 1/12.5

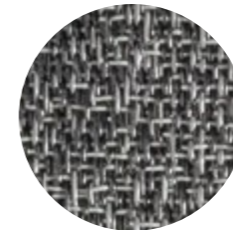


SCALE 1/1

Halley - Roll & Tile

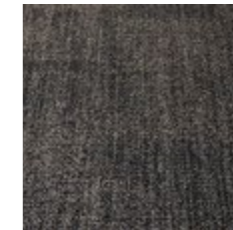


SCALE: 1/12.5

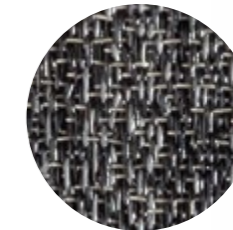


SCALE 1/1

Rosetta - Roll & Tile

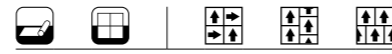


SCALE: 1/12.5

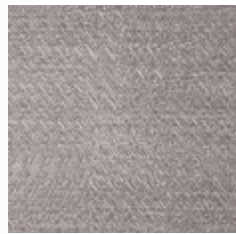


SCALE 1/1

LUSTRE



Morion Brown - Roll & Tile

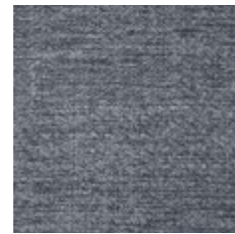


SCALE: 1/12.5

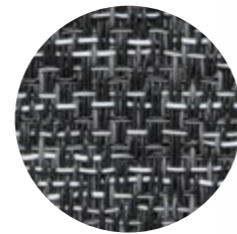


SCALE 1/1

Obsidian Black - Roll & Tile



SCALE: 1/12.5



SCALE 1/1

Chromite Grey - Roll & Tile



SCALE: 1/12.5

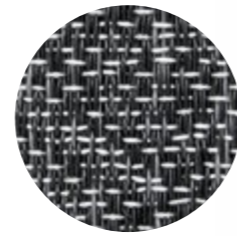


SCALE 1/1

Magnetite Grey - Roll & Tile



SCALE: 1/12.5



SCALE 1/1

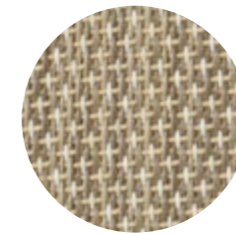
NEW BASIC



Topaz - Roll & Tile



SCALE: 1/12.5



SCALE 1/1

Canyon - Roll & Tile



SCALE: 1/12.5

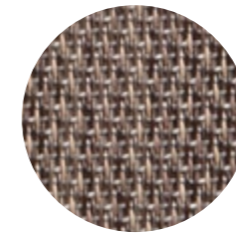


SCALE 1/1

Flint - Roll & Tile



SCALE: 1/12.5



SCALE 1/1

Opal - Roll & Tile

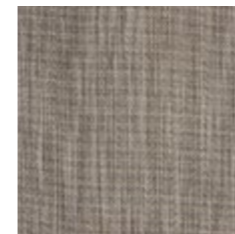


SCALE: 1/12.5

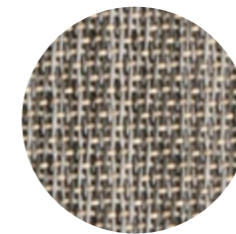


SCALE 1/1

Gritstone - Roll & Tile

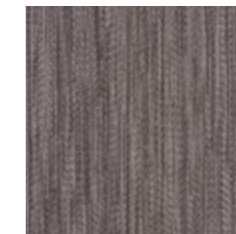


SCALE: 1/12.5



SCALE 1/1

Lava - Roll & Tile

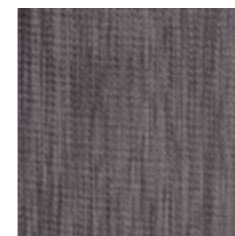


SCALE: 1/12.5

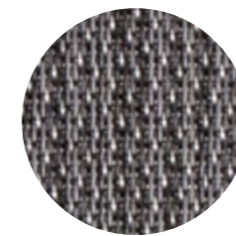


SCALE 1/1

Bazalt - Roll & Tile



SCALE: 1/12.5



SCALE 1/1

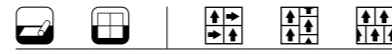
Iron - Roll & Tile



SCALE: 1/12.5



SCALE 1/1



Moonrock - Roll & Tile



SCALE: 1/12.5



SCALE 1/1

Nebula - Roll & Tile



SCALE: 1/12.5



SCALE 1/1

Coffee Bean - Roll & Tile



SCALE: 1/12.5

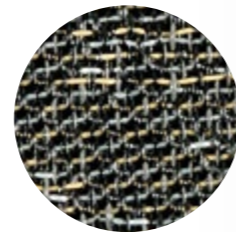


SCALE 1/1

Neptune - Roll & Tile



SCALE: 1/12.5



SCALE 1/1

Juno - Roll & Tile



SCALE: 1/12.5



SCALE 1/1

Titan - Roll & Tile

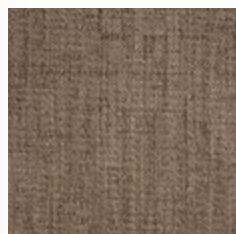


SCALE: 1/12.5



SCALE 1/1

Orion - Roll & Tile



SCALE: 1/12.5

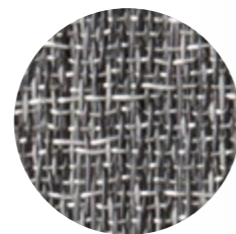


SCALE 1/1

Moonless Night - Roll & Tile

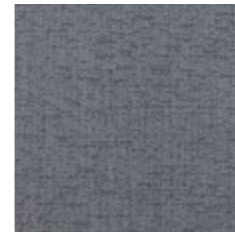


SCALE: 1/12.5

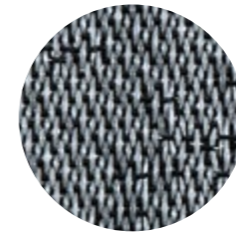


SCALE 1/1

Andromeda - Roll & Tile



SCALE: 1/12.5

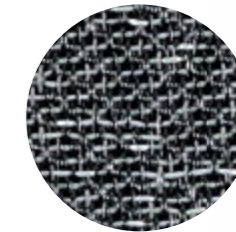


SCALE 1/1

Black Hole - Roll & Tile



SCALE: 1/12.5



SCALE 1/1

Planet - Roll & Tile

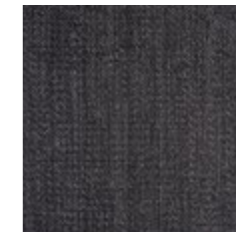


SCALE: 1/12.5



SCALE 1/1

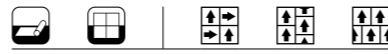
Eclipse - Roll & Tile



SCALE: 1/12.5



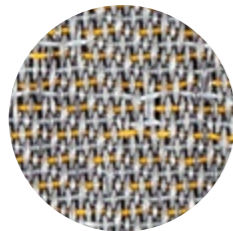
SCALE 1/1



Zenith - Roll & Tile

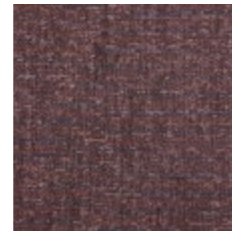


SCALE: 1/12.5

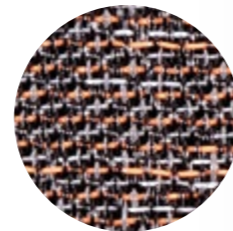


SCALE 1/1

Corona - Roll & Tile



SCALE: 1/12.5



SCALE 1/1

Quasar - Roll & Tile

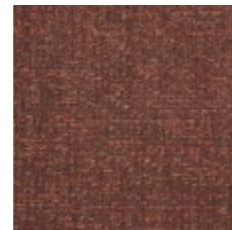


SCALE: 1/12.5

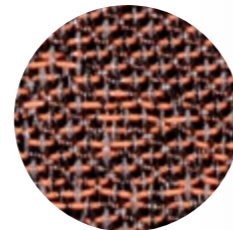


SCALE 1/1

Fireball - Roll & Tile

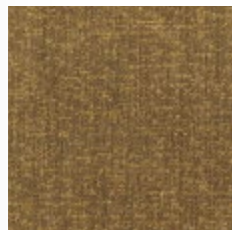


SCALE: 1/12.5



SCALE 1/1

Supernova - Roll & Tile



SCALE: 1/12.5

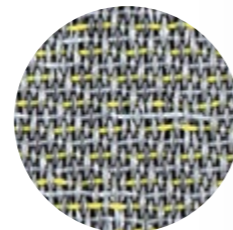


SCALE 1/1

Atmosphere - Roll & Tile

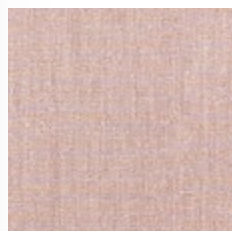


SCALE: 1/12.5

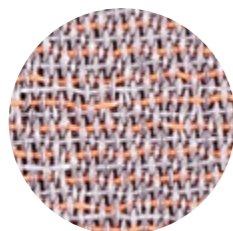


SCALE 1/1

Asteroid - Roll & Tile

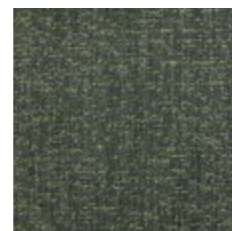


SCALE: 1/12.5

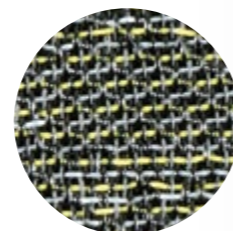


SCALE 1/1

Zodiac - Roll & Tile

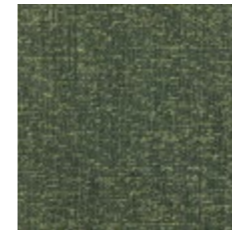


SCALE: 1/12.5

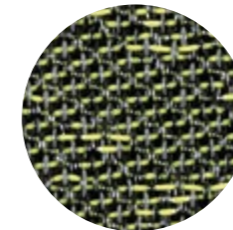


SCALE 1/1

Orbital - Roll & Tile

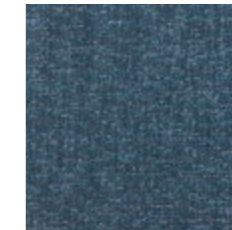


SCALE: 1/12.5

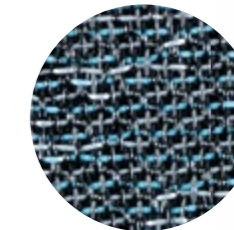


SCALE 1/1

Aurora - Roll & Tile



SCALE: 1/12.5

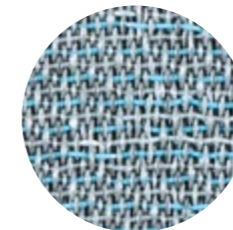


SCALE 1/1

Equinox - Roll & Tile

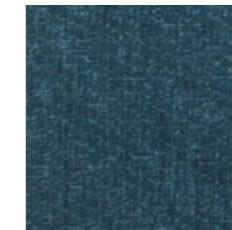


SCALE: 1/12.5

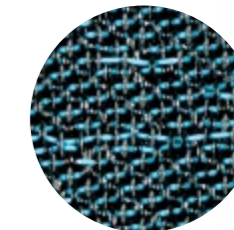


SCALE 1/1

Pulsar - Roll & Tile

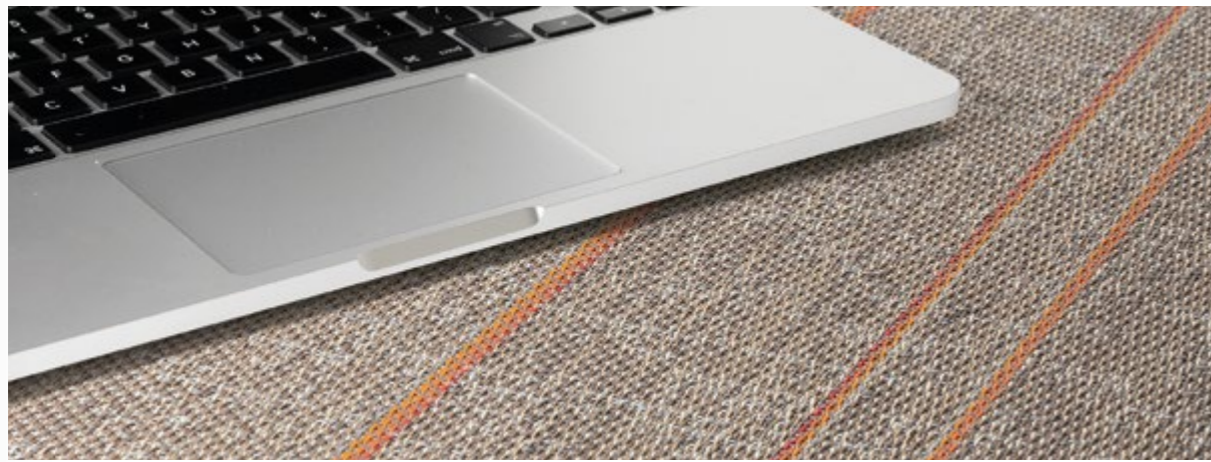


SCALE: 1/12.5



SCALE 1/1

STRIPES



Moonrock Orange - Roll & Tile



SCALE: 1/12.5

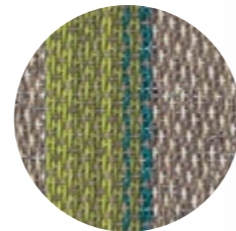


SCALE 1/1

Moonrock Green - Roll & Tile



SCALE: 1/12.5

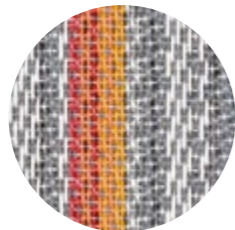


SCALE 1/1

Diamond Orange - Roll & Tile



SCALE: 1/12.5

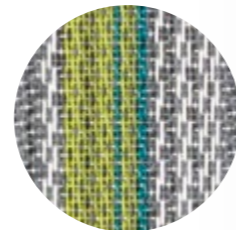


SCALE 1/1

Diamond Green - Roll & Tile

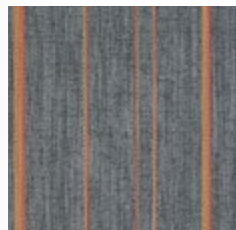


SCALE: 1/12.5

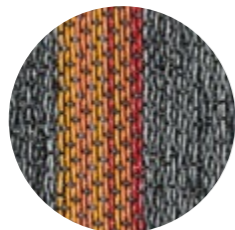


SCALE 1/1

Moonless Night Orange - Roll & Tile



SCALE: 1/12.5

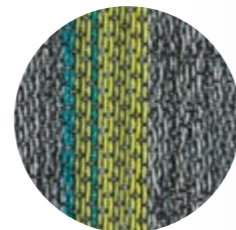


SCALE 1/1

Moonless Night Green - Roll & Tile

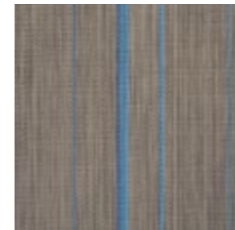


SCALE: 1/12.5

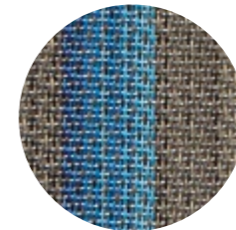


SCALE 1/1

Flint Blue - Roll & Tile



SCALE: 1/12.5

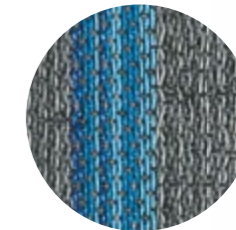


SCALE 1/1

Moonless Night Blue - Roll & Tile



SCALE: 1/12.5

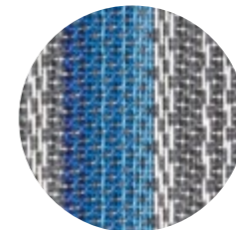


SCALE 1/1

Diamond Blue - Roll & Tile





SCALE: 1/12.5



SCALE 1/1

TECHNICAL INFO

	Warranty		10 years*
	Composition		83% vinyl - 7% fiberglass 10% PET
	Backing		Vinyl + Felt
	Total thickness	ISO 1765	5 mm 0.20"
	Total weight	ISO 8543	3000 g/m ² 88.5 oz/yd ²
	Roll width	EN ISO 24341	ca. 200 cm ca. 6'7"
	Roll length	EN ISO 24341	ca. 30 m 32.8 yd
	Tile size 16 pcs per box	EN 994	50 cm x 50 cm 19.69" x 19.69"
	Level of Use	EN 1307 ASTM D5252	Class 33 Heavy commercial use
	Foot traffic test	ASTM D6119-12	Heavy traffic
	Castor chair suitability	EN 985	Continuous use
	Reaction to fire	EN 13501-1	Bfl-s1
	Critical radiant flux	ASTM E648-15e1 NFPA	0.84 W/cm ² Class I
	Smoke density	ASTM E622	< 300
	Walking test	ISO 6356 AATCC 134-2006	< 2 kv Permanently antistatic
	Light fastness	ISO 105-B02	≥ 8
	Slip resistance	EN 13893 ASTM C1028-07 DIN 51130 EM 13036-4	≥ 0,3 0,85 R9 65
	Impact sound reduction	ISO 10140	19 dB
	Acoustical absorption	ISO 354	$\alpha_w = 0,15$
	Walking noise reduction	EPLF 021029-3	SL70
	Dimensional stability	EN 986 ISO 2551	Meets the requirements
	Thermal resistance	ISO 8302	Suitable for underfloor heating
	CE Certificate	EN 14041	0493-CPR-0151

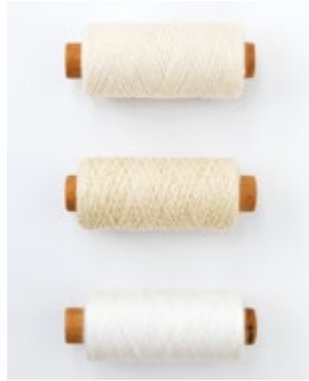
2TEC2 DOES NOT FOLLOW THE INDUSTRY STANDARDS, 2TEC2 EXCEEDS THEM.

Environment, health and safety

Recycled Content	10%
Reach	Compliant
LEED v4	Compliant (LEED Contributing Product)
BREEAM International	Compliant
CDPH Standard Method V1.2	Pass
BREEAM® NOR	Pass
French VOC Regulation	A+ Certified
French CMR components	Pass
AGBB/ABG	Pass
Belgian VOC Regulation	Pass
Indoor Air Comfort Gold	Pass
Blue Angel (RAL VZ120)	Pass
EN 717-1	E1
M1 Protocol of July 2017	Pass
Plasticizer Content	Phthalate Free



CO₂ neutral on demand - *Terms and conditions are available on request



LE|PROJECTS

LE Projects is a subsidiary of Limited Edition. Limited Edition & 2tec2 are members of the same group of companies.

For 25 years Limited Edition has been supplying bespoke rugs to the project market for hospitality, luxury retail, offices, public spaces and residential interiors. All rugs are custom-made, designed and manufactured in Belgium.

Contact:
Info@leprojects.com - www.leprojects.be



098

Dior, Madrid, Spain

www.2tec2.com

284, CHAUSSÉE D'AELBEKE - 7700 MOUSCRON, BELGIUM • T +32 (0)56 85 47 47 • INFO@2TEC2.COM

ORDER YOUR SAMPLES ONLINE: 2TEC2.COM